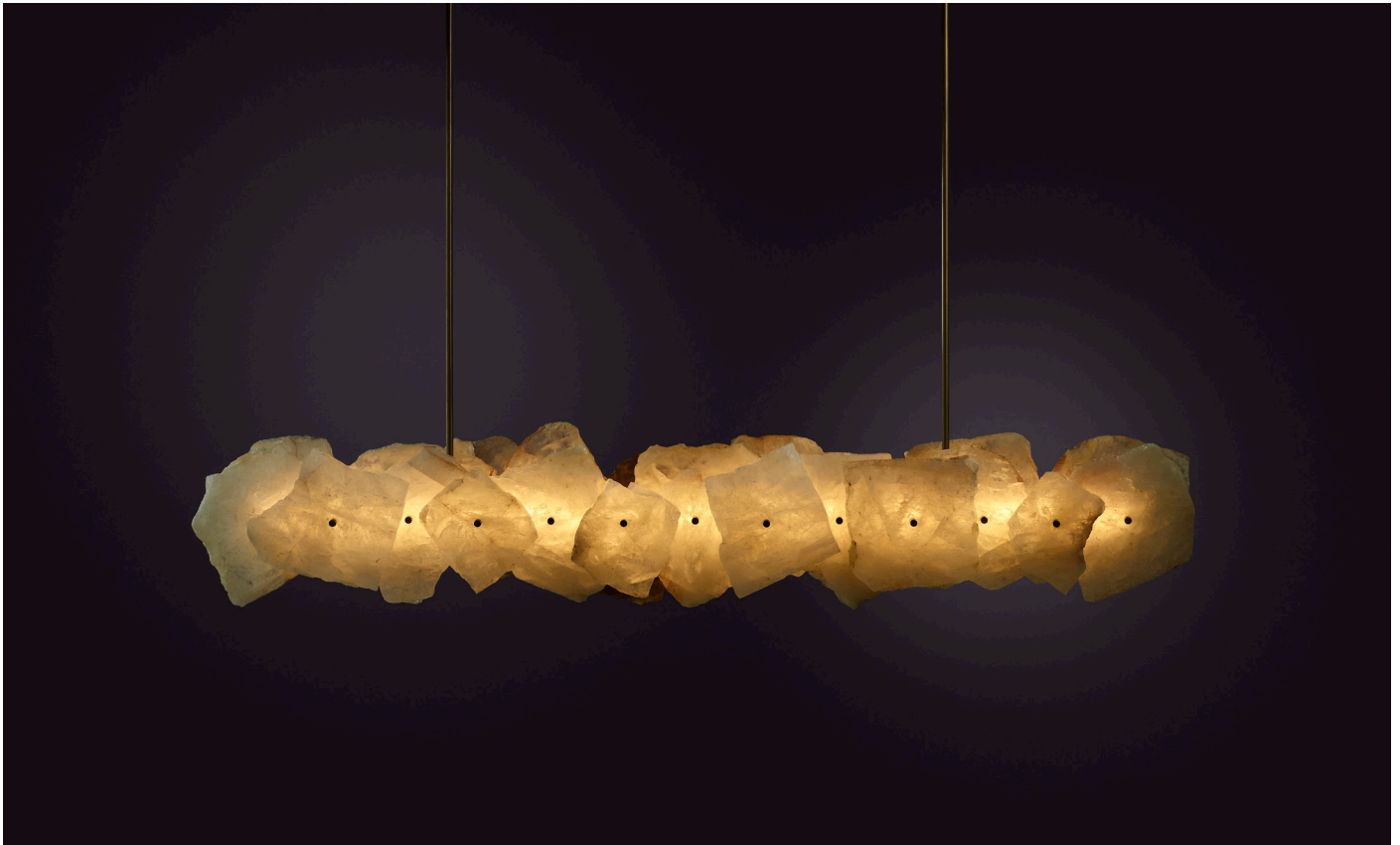


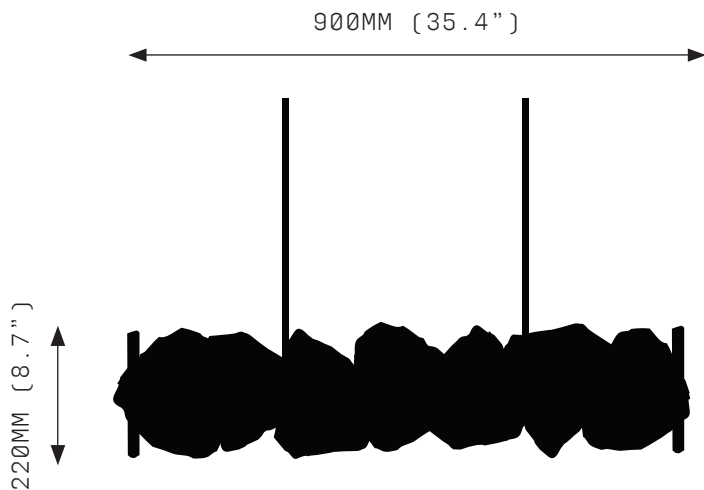
PETRA II LINEAR 900



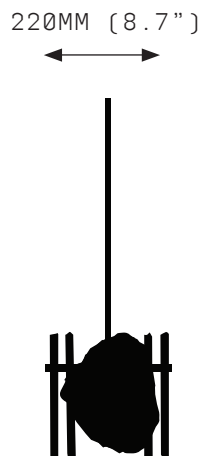
PETRA (from the Greek Πέτρα, meaning stone) celebrates the subtleties and complexities of quartz. Quartz was highly revered by the ancients who believed that it was eternally frozen ice, miraculous because it was divinely forged. Prized for its mythic origin, its strength and its lustre, quartz has long been used to articulate sacred objects.

Every PETRA embodies an individual stone biography, the resonance of formation made visible by individual colouration, translucency and veiny detail. PETRA amplifies the mythical and geological properties of quartz, merging fire and ice in stone.

PETRA II LINEAR 900



FRONT VIEW



SIDE VIEW

SPECIFICATIONS

Ordering Code:
PET.2.900

Lamp:
24V LED WW 2700K

Lumens:
1344 lm

Voltage:
24V DC

Watts:
15W

Weight:
Approx. 31kg*
*Exclusive of canopy

Inclusions:
16 Quartz crystal slices
Power Supply Unit x 60W

Exclusions:
User Interface, Dimmer Unit

PRODUCT OPTIONS

Quartz:
CQ Clear Quartz
RQ Rose Quartz
SQ Smoky Quartz

Finishes:
AB Aged Brass

Suspension:
ROD Vertical Rod

Canopy: *
RFM Round Flush Medium
RFL Round Flush Large
RSM Round Surface Medium
RSL Round Surface Large
Linear Flush Mount
Linear Surface Mount
*Refer to Canopy Specification Guide

WARRANTY

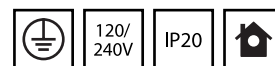
3 Years Fixture
3 Years Power Supply Unit
3 Years LED

Petra II Linear is a solid fixture that will require very little maintenance over the years.

If your Petra II Linear Sconce is treated with care, it will shine brightly for many years to come.

Quartz is a mineral formed by the Earth. Each crystal piece will be unique due to natural variation of size, shape, colour and clarity.

Contact us for custom variations.



Installation should only be undertaken by a qualified professional